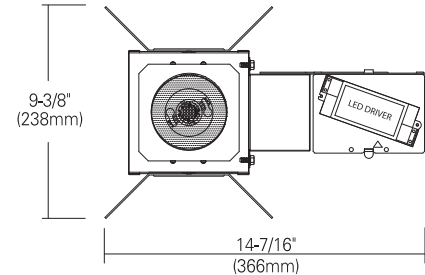
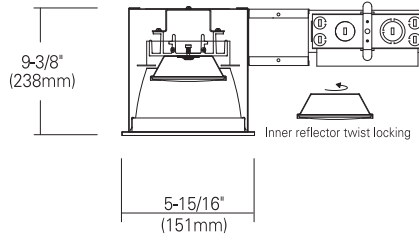
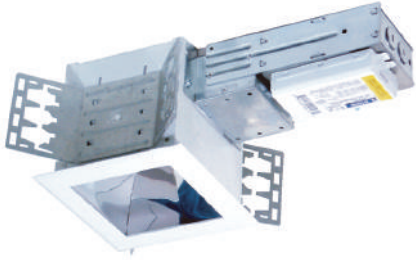


DLED-505S

For 5" X 5" Square Aperture, COB Chip
14W, 26W & 34W LED, 120-277V, 0-10V Dimmable

Catalog #		Type
Project		Date
Prepared by		

5" LED-SQUARE



DESCRIPTION

Ceiling Cut-out : 5-5/8" x 5-5/8"

The DLED-505S is a 5" X 5" square aperture housing for accent and provided solid state LED panel with aluminum cast heat sink in concealed reflector for designed cutoff. The electronic driver on junction box can be replaced through below ceiling but designed for long life operation. Long life with 5years maintain 70% (L70) of initial lumens, low energy consumption are major purpose.

DESIGN FEATURES

Junction Box

- Listed for through branch circuit wiring. (Max.8 No 12 AWG 90°C branch circuit conductors.)
- (5)1/2" knockouts with true pry-out slots and (4) knockouts with Romex cable clamp.
- Ground wire provided on J-box.
- Provided listed quick connectors for easy snap-on wires. (Optional)

Mounting Channel Bracket

- Commercial mounting kit provided up to 5" vertical adjustment which accommodates 1/2" EMT conduit, optional HBC-24 bar hanger or lathing channels for T-bar grid or concealed spline ceiling.

Heat Sink

- Die cast aluminum designed by simulation of heat distribution to reduce LED junction temperature for maintaining constant light output, color and life of solid state components.

Trims

- See "Trims" spec sheet for selection or ordering information.

Optics

- Precisely designed Cell-Inner-Reflector directly attached to individual LED source provides precise beam control and reduce glare by its lower recesses.
- Glass Lens: Textured fine surface of tempered glass providing high lumen transmission and diffusion for even illumination.

LED Engine

- COB(Chip on board) LED package.
- Heat sink designed by computer simulation and aluminum board for low heat operation.
- Electrical Connection: LED lamp module is replaceable via on-board quick disconnect terminal (No tools required).

LED power supply driver

- Include 120~277V input high efficacy driver with the capability to dim using a Triac 120V low voltage electronic dimmer switch.
- Driver feature power factor >.90, THD <20% and has integral thermal protection to sense over temperature or internal failure.
- Driver mounts externally to the module, allowing future replacement, if needed.
- Consult with factory for optional 0~10V analog dimmable driver.

Warranty

- 5years of lamp life.

Listing

- cCSA-us Certificated

SPECIFICATION			
LED Quantity	1EA (COB)		
Input Voltage	120V-277V AC		
Wattage (+/-5%)	14 W	26 W	34 W
Lumen (+/-5%)	821	1,310	1,786
Efficacy (LPW)	58.6	50.4	52.5
Beam Angle	72°	72°	72°
Color (+/-5%)	2700K-5000K		
CRI (Typical)	80, 90		
Dimming	Triac(Standard), 0-10V		
Lamp Life	5 yrs.		
Environment	Indoor, Wet		

Triac Approved Dimmers

- * Lutron: NovaT (Ntelv300&600)
: D i v a (DVELV-300P&303P)
- * Leviton: Acenti : Ate06-1Lw
- * Leviton: Trimatron #705W (incandescent)

Consult tech. service or factory for additional dimmers

TRIMS & PHOTOMETRIC REPORT

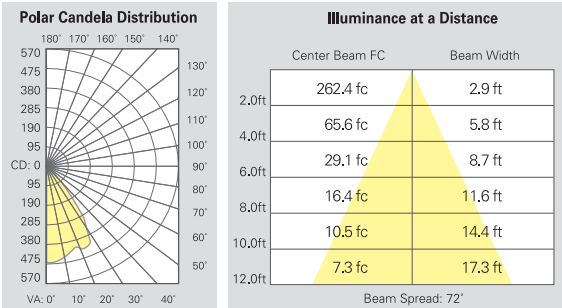
For DLED-505S

5" LED-SQUARE

TRIMS

TML-512	White Square Trim w/ Flat Frosted Lens Die-cast Aluminum Frame Frame : 6-1/4" SQ.	
TML-512R	Haze Clear Square Die-cast Aluminum Frame Frame : 6-1/4" SQ.	
TML-519-HC	Haze Clear Square Reflector Die-cast Aluminum Frame Frame : 6-1/4" SQ.	
TML-515	Wall Wash Reflector Die-cast Aluminum Frame Frame : 6-1/4" SQ.	

PHOTOMETRIC REPORT * Contact Factory for IES File



[DLED-505S+TML-519-HC]

ORDERING INFORMATION

Housing	Watts	Color Temp.	Driver	TP. (0-10V)	Trim	Trim Ring
DLED-505S	-14 : 14W -26 : 26W -34 : 34W	-27 : 2700K -30 : 3000K -40 : 4000K -50 : 5000K	-U T D : 120~277V, Triac Dimming (Standard) -UZTD : 120~277V, 0~10V Dimming	-ZTD1 : 120V -ZTD2 : 277V	[TML-512R] [TML-519-HC] [TML-515] [TML-512] -HC : haze clear -WH : white -PR : pewter -BK : black -CP : champagne -WH : white painted	-WH: white -MO: mocha -BK: black -CA: cappuccino -SN: satin nickel -CH: chrome -AN: antique nickel -UN: natural steel -AC: antique copper -PB: polished brass

Example : DLED-505S-14-30-UZTD-ZTD1

Example : TML-512R-HC-WH